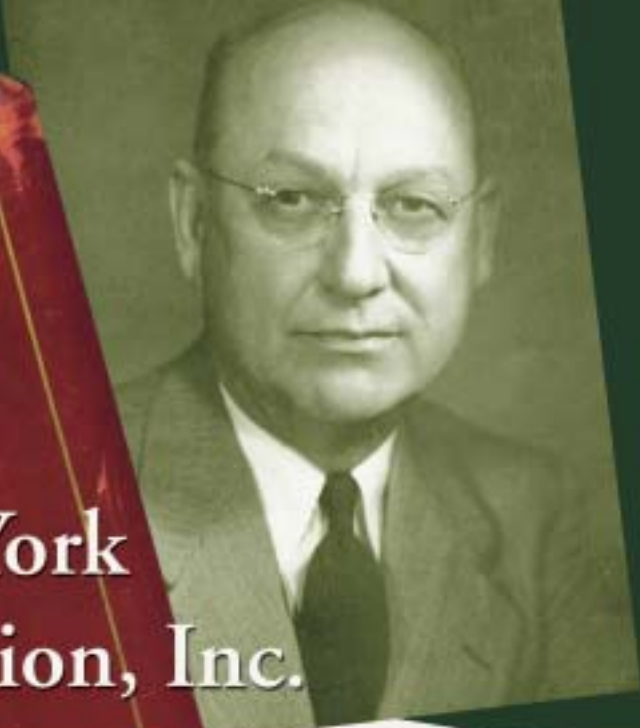




The University of the State of New York

STATE OF NEW YORK
COURT OF CHANCERY

Article
by Chapter
to the fil
of PAYMENT
as an approp
or Commission
this corporati
officers and
the name of the
Commissioner of
matter.



Northern New York Community Foundation, Inc.

Annual Report
1929 - 2004

Foundation to g
\$700,000 in two g
Children's Clinic, Flower Library



The Mission of the Northern New York Community Foundation

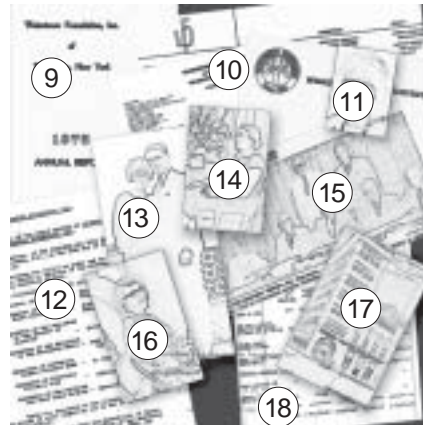
The Northern New York Community Foundation raises, manages and administers an endowment and collection of funds for the benefit of the community, built and added to by gifts from individuals and organizations committed to meeting the changing needs of Northern New York.

Guided by a board of community leaders, the Foundation makes grants to support the work of non-profit organizations and provides scholarships to individuals in Jefferson and Lewis Counties. Donors who establish funds within the Foundation receive professional administration, significant tax savings, and the opportunity and satisfaction of benefiting our community now and in the future.



Front cover:

- 1 Certificate of Incorporation, 1929
- 2 Bernard A. Gray, founder
- 3 Book of Minutes, 1929-1961
- 4 Pauline Dillenback, donor
- 5 Official seal
- 6 James E. McVean (left), Executive Director
- 7 Watertown Daily Times, 2004
- 8 Doris E. Carleton, donor



Back cover:

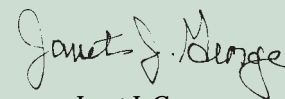
- 9 1975 Annual Report
- 10 Foundation letterhead
- 11 Donna Macsuga, first woman Board President
- 12 Minutes of the first meeting, 1930
- 13 Evelyn and Earle Kelsey, donors
- 14 Rita Mackey, Board member
- 15 1966 Annual Meeting attendees: *Ruth Child, Gen. G. Stanley Smith, Dr. Walter Atkinson, Harry D. Hershey, Russell Wright; standing, Delos Cosgrove and Edward Duffy*
- 16 Catherine Cullen, Foundation Secretary
- 17 Northern New York Trust Co., 1930 ca.
- 18 Student Loan Program accounting, 1972

In 1928 Bernard Gray, Chairman of the Board of the Northern New York Trust Company, boarded a train in Watertown and traveled to Cleveland, Ohio. The purpose of his trip was to find out more about the Cleveland Foundation, the first community foundation in the United States. From that initial trip came the impetus to establish a foundation to benefit the city of Watertown and the surrounding area.

Over the next 70 years the Foundation grew steadily and the community leaders who served as directors established priorities which reflected the changing needs in the community. Shortly after World War II the first student loans were given to returning service men. As Foundation resources grew, the loan program was transformed to provide scholarships for college bound high school students. Today scholarships are also available for non-traditional students whose careers may follow unusual paths. At the beginning, the largest Foundation grants went to support the work of the Watertown Community Chest. Today the United Way is one of many organizations who receive annual grants from Foundation funds.

Flexibility is the word which I feel best explains why the Northern New York Community Foundation has operated so successfully over the years. As financial resources have grown and community needs have changed, so too has the ability of the Foundation to respond thoughtfully and effectively. In 1992 we were able to hire Alex Velto, an experienced development professional. Under his leadership, the Foundation has seen a new period of philanthropy. Our assets have increased exponentially as has our ability to make larger and more meaningful grants to community organizations.

Realizing how far we have come, it is with enormous excitement that we look forward to the next 70 years!



Janet J. George
President

2003 Grants from Unrestricted Funds



Bernard A. Gray
Chairman of the Board of the Northern New York Trust Company Bernard Gray was the driving force behind the creation of the Foundation and served on its board from 1930 to 1964.

Alexandria Township Historical Society <i>For repairs to the Cornwall Brothers Store in Alexandria Bay</i>	\$ 10,000
Beaver River Central School <i>To purchase and develop a 59 acre parcel adjacent to the school for a trail system and recreation area</i>	15,000
Center for Community Studies at Jefferson Community College <i>For the Community Forums Sustainability Series</i>	5,000
Children's Home of Jefferson County <i>To sponsor a speaker on child abuse</i>	2,000
Children's Home of Jefferson County <i>To expand an abuse and neglect prevention program for at risk youth age 7 to 12 and their families</i>	20,000
Council on Foundations <i>Membership</i>	2,290
Credo Community Center <i>To establish an all seasons property services program to teach job skills and support a work ethic among its clients</i>	28,500
Credo Community Center <i>Toward the renovation of its two residence facilities in Watertown</i>	10,000
Food Bank of Central New York <i>To support emergency food programs in Jefferson and Lewis Counties with \$400,000 in food</i>	40,000
Hand In Hand Early Childhood Center <i>For the play room in their new facility in Lowville</i>	35,000
Hearts for Youth <i>For a playground in Redwood</i>	5,000
Historical Association of South Jefferson <i>For repairs to the Adams Grange Hall</i>	22,000
Jefferson County Agricultural Development Corporation <i>For a tour for educators to promote careers in agriculture</i>	2,475
Jefferson County Historical Society <i>To help fund Silver Speaks, an exhibit of traditional jewelry of the Middle East</i>	1,000
Junior Achievement of Central New York <i>To establish a program in Lewis County schools</i>	4,000

2003 Grants from Unrestricted Funds

Kids of Castorland <i>Equipment for a new playground</i>	\$ 10,000
Land Trust Alliance <i>For technical assistance to northern New York land trusts</i>	2,000
Meals on Wheels of Jefferson County <i>To fund meals for those unable to pay for them</i>	10,000
Neighbors of Watertown <i>To support a summer youth program of building repairs in Watertown</i>	30,000
Neighbors of Watertown <i>To establish an emergency home repair program for low income residents</i>	30,000
North Country Children's Clinic <i>To implement a Reconnecting Youth curriculum at Watertown High School</i>	20,000
North Country Christian Youth Organization <i>Recreational equipment for The Edge Teen Center in Adams</i>	5,000
Northern New York Agricultural Historical Museum <i>For summer art workshops at Stone Mills for children and families</i>	1,179
Northern New York Community Foundation Scholarships <i>Support for student scholarships in all disciplines</i>	130,994
Ontario Bays Initiative <i>For a partial match for a Land Trust Alliance grant</i>	1,500
Rotary Club of Watertown <i>For tree planting on Green Street</i>	650
Sci-Tech Center <i>For a scholastic chess program</i>	2,450
SUNY Potsdam <i>Need-based scholarships for Jefferson and Lewis County students to attend Crane Youth Music summer camp 2003</i>	6,000
SUNY Potsdam <i>Need-based scholarships for Jefferson and Lewis County students to attend Crane Youth Music summer camp 2004</i>	6,000
Syracuse Symphony Orchestra <i>For a summer concert in Lewis County</i>	5,000
The Nature Conservancy, Western NY Chapter <i>For a swallow-wort control and education program</i>	5,000

MILESTONES

- 1929** Incorporated as the Watertown Foundation
In the 1930s and 1940s the Foundation grew slowly but steadily.
- 1930** The Foundation held its first board meeting on January 15. David M. Anderson was elected its first president and Bernard Gray, one of the original proponents of the Foundation, was appointed the executive secretary. Gray would serve in this capacity for the next 35 years.
- 1934** The first bequest was received from the estate of DeWitt C. Middleton. The first grant for \$1,000 was made to the Watertown Community Chest.
- 1935** Grants were made to the Visiting Nurse Association and the local chapter of the Boy Scouts.
- 1937** Mercy Hospital's Children's Division and the Girl Scouts Association were grant recipients.



Howard H. Splete

*Long time director of the
Branough Memorial Youth Club*
To honor his memory, a fund
in his name was established
at the Foundation to support
the youth club in Carthage.

2003 Grants from Unrestricted Funds

Theresa Rotary Club	\$ 7,900
<i>To construct a pavilion in the village park</i>	
Tug Hill Ski Club	2,400
<i>For six radios for the volunteer Nordic Ski Patrol working in the Winona State Forest</i>	
Village of Dexter	5,000
<i>For improvements to Riverside Park</i>	
Village of Evans Mills	35,000
<i>To renovate the historic Mason's Hall for a new library and museum</i>	
Watertown Family YMCA	10,000
<i>For the Youth Empowerment Program at Wiley and Case Schools</i>	
Watertown Urban Mission	10,000
<i>For the Wheels to Work Program</i>	
Watertown Urban Mission	25,000
<i>To establish an emergency prescription drug program</i>	
2003 Total	\$563,338

2004 Grants from Unrestricted Funds through June 30, 2004

New Day Children's Center	\$ 5,000
<i>To expand the Children's Center's playground</i>	
LaFargeville Central School	3,000
<i>For the school's Headwaters Nature Trail and Science Center</i>	
South Lewis Central School	3,000
<i>For a summer SuperStage project at Port Leyden Elementary School</i>	
The Handweaving Museum and Arts Center	2,500
<i>To develop the "Loom Stories" interpretive exhibit</i>	
Henderson Harbor Performing Arts Association	1,050
<i>For scholarships to the Lila Bull Arts Academy</i>	
Volunteer Center of Jefferson County	4,875
<i>To support their transportation program</i>	
North Country Children's Clinic	350,000
<i>Toward the purchase and renovation of their new building</i>	
Roswell P. Flower Memorial Library	250,000
<i>For the historic restoration and modern renovation of the library building</i>	

Friends of Turin Library <i>For their new community library</i>	20,000
Lyons Falls Library <i>For renovations to create a community room at the library</i>	10,000
Northern Choral Society <i>For their 50th anniversary composition and performance</i>	7,500
Watertown Urban Mission <i>To help renovate the Impossible Dream thrift store</i>	15,000
Watertown Family YMCA <i>For renovations and equipment for consolidation with Branaugh Memorial Youth Club</i>	90,075
Thousand Islands Area Habitat for Humanity <i>To purchase tools and a storage trailer</i>	8,000
Watertown American Little League <i>For improvements to their ball field</i>	10,000
Harold T. Wiley School <i>For the Wiley School playground</i>	20,000

North Country Steps Forward

In 2004, the Foundation received a \$123,000 grant from the New York State Attorney General's Office to administer a health and nutrition program aimed at reaching 10,000 people in Jefferson and Lewis Counties. In addition to the Foundation, the coalition of community groups involved in implementing the program consists of:

- Jefferson County Public Health Service
- Watertown Family YMCA
- North Country Children's Clinic
- Cornell Cooperative Extension
- Lewis County Public Health Agency
- Mountain View Prevention Services



Henry A. Hudson

Attorney, Supreme Court Justice

Henry Hudson grew up in Watertown and served as the city's mayor and Jefferson County's Supreme Court Judge. Through his estate, Judge Hudson established a fund at the Foundation.

2003 Grants from Advised Funds

Organizational grants from funds established by donors.

Grants of \$100 or more include:



Carl H. Frink

Inventor, Business Leader

Carl Frink gained an international reputation for manufacturing snow removal equipment in Clayton. His daughter Grace Louise Reinman established a scholarship in his memory at the Foundation.

American Diabetes Association	\$ 1,000
Association for the Blind & Visually Impaired	300
Children's Home of Jefferson County	250
Clarkson University	22,500
Clayton Fire Boat Fund	500
Fire Departments:	2,000
<i>Carthage, Castorland, Lowville, West Carthage</i>	
Frederic Remington Art Museum	4,000
Friends of Lewis County Hospice	825
Henderson Free Library	1,000
Hospice of Jefferson County	300
Jefferson Community College Foundation	2,900
Jefferson County Historical Society	100
Lyme Community Foundation	1,100
Meals on Wheels of Greater Watertown	800
Minna Anthony Common Nature Center	100
North Country Children's Clinic	4,100
North Country Public Radio	1,000
Northern Choral Society	250
Orchestra of Northern New York	100
Planned Parenthood of Northern New York	1,100
Potsdam College Foundation	600
River Hospital Foundation	100

2003 Grants from Advised Funds

Resolution Center of Jefferson and Lewis Counties	\$ 300
Samaritan Foundation of Northern New York	8,500
Save The River	750
Sci-Tech Center	1,000
St. Lawrence University	2,000
The Antique Boat Museum	11,100
The Handweaving Museum and Arts Center	2,100
The Nature Conservancy	200
The Rotary Foundation	100
The Salvation Army	100
Thompson Park Conservancy	6,225
Thousand Islands Bridge Authority	500
Thousand Islands Foundation	5,000
Thousand Islands Land Trust	5,200
Thousand Islands Museum	250
Thousand Islands Performing Arts Fund	8,250
United Way of Northern New York	14,200
Volunteer Center of Jefferson County	450
Watertown Family YMCA	1,000
Watertown Urban Mission	735
WPBS-TV	2,200
WRVO Public Radio	150
2003 Total Funds Expended	\$140,235

MILESTONES

- 1939** An Education Loan Program was established. The first loans were made to Arthur C. Stever, Jr. (\$250) and Robert J. Doran (\$150).
- 1941** The Foundation contributed to the war effort with grants to the Jefferson County War Chest.
- 1944** Grants in excess of \$3,000 were given to the American Red Cross
- 1945** A \$500 grant was made to the YMCA for rehabilitation of its building; education loans were increased to \$500 each; \$1,500 was pledged to the House of the Good Samaritan Building Fund.
- 1946** A \$175 loan to Clark Hamlin was forgiven because he had been badly wounded in the war. (Mr. Hamlin went on to become clerk of the Jefferson County Board, forerunner of the County Manager's position).
- 1947-50** The Foundation's college loan program continued to assist returning veterans with educational expenses.
- 1949** A trust was established under the will of Mary S. Goodale for Jefferson County Sanatorium patients.

2003 Grants from Restricted Funds



Delos M. Cosgrove, Jr.

*Watertown Attorney
and Civic Leader*

Delos Cosgrove devoted his life to improving the quality of health care in northern New York. The Foundation was another important part of Delos Cosgrove's life. He served on the board from 1953 to 1980.

Heather Anderson Memorial Scholarship	\$ 250
Scholarship for Watertown High School	
Walter S. Atkinson Fund	
For capital campaign to improve facilities at Samaritan Medical Center	
	600
To support services of United Way of Northern New York in Jefferson County	
	633
Maurice D. Barnette Scholarship Fund	
Scholarship for Watertown High School	
	480
Julie Bettinger Memorial Scholarship Fund	
Scholarships for Belleville-Henderson and South Jefferson Central Schools	
	800
Bicentennial Tree Fund	
To plant trees in Watertown	
	1,700
Black River Communities Corporation Cox Scholarship	
Scholarships for Towns of Rutland, LeRay, Pamela and Village of Black River	
	1,900
Robert F. Breeze Scholarship Fund	
Scholarships for Lowville Academy and Central School	
	10,792
Brown Fund	
To encourage the preservation of significant historical structures in Lewis County	
	2,500
Charles Campbell Scholarship Fund	
Scholarships for second year technical students at Clarkson University	
	1,500
Doris E. Carleton Fund	
Scholarships in all disciplines	
	16,800
College Women's Club of Jefferson County Scholarship	
Scholarships for women in Jefferson County	
	2,250
Dr. Charles E. Commeret Sr. Memorial Scholarship	
Scholarship for Watertown High School	
	500
Jennifer Corbett Rainbow Scholarship Fund	
Scholarships for Watertown High School	
	1,300
Leon A. Davis Scholarship Fund	
Scholarships for Lowville Academy and Central School	
	2,825
Glenn S. Doull Scholarship Fund	
Scholarship for Watertown High School	
	700
Carl H. Frink Scholarship Fund	
Scholarships for Thousand Islands Central School	
	\$ 4,950

2003 Grants from Restricted Funds

Greenizen Scholarship Fund	
Teaching scholarship for Thousand Islands Central School	2,400
Gladys Hart Fund	
To support Big Brothers Big Sisters of Northern New York	448
Herring College Memorial Fund	
Scholarships in engineering, science and related fields	100,000
Gary M. Jones Memorial Fund	
Scholarships for Watertown High School	3,100
Lucy E. Kendrew Fund	
To the Watertown City School Board to be used at their discretion	637
Marie C. and Ralph J. Marilley Scholarship Fund	
Scholarships for Beaver River Central School	5,800
Mary Alice and Joseph B. Meichelbeck Family Scholarship	
Scholarship for Watertown High School	500
Alfred and Frances Paige Scholarship	
Scholarships for Watertown High School	1,000
Rose A. Petrie Fund	
Scholarships in all disciplines	6,360
Harriet L. Pruyn Trust	
For capital campaign to improve facilities at Samaritan Medical Center	5,400
To support services of United Way of Northern New York in Jefferson County	5,832
Harriet L. Pruyn (Clause 15) Fund	
To support services of United Way of Northern New York in Jefferson County	1,167
Reinman Family Fund	3,400
Food Bank of Central New York for Council of Churches Food Pantry Thousand Islands Museum The Handweaving Museum and Arts Center Thousand Islands Performing Arts Fund for Clayton Opera House	
Colleen St. Pierre Scholarship Fund	
Scholarship for Watertown High School	\$ 800
Harvey Simon Scholarship Fund	
Scholarships for Watertown High School	900

MILESTONES

The 1950s saw an increase in grants to medical and human service organizations

1952 Grants were made to the Infantile Paralysis organization and the Watertown Group for Retarded Children.

1955 The first grant was made to the Jefferson County Mental Health Association.

In the 1960s total student loans reached \$138,370, awarded to 126 students.

1964 The fair market value of trusts held for the Foundation was \$787,864.

1972 A lead grant of \$100,000 was provided for the Roswell P. Flower Memorial Library addition.

This period saw the replacement of the education loan program with one of scholarships.

1978 The Herring College Scholarship Program was established by court order.

The Foundation funded the Fort Drum feasibility study.

2003 Grants from Restricted Funds



James E. McVean

Educator and College President

Upon retiring from the presidency at Jefferson Community College, James E. McVean became the Foundation's Executive Director.

He was responsible for the development of the Foundation's extensive scholarship program.

DeForest H. and Marion P. Smith Fund	10,500
To support services of Hospice of Jefferson County To support Roswell P. Flower Memorial Library	
Howard Splete Fund	
To support Branaugh Youth Club	
Syracuse Symphony Fund	
To support concert series in Watertown	
The Nature Conservancy Fund	
To support conservation activities	
United Way of Northern New York Fund	
To support services	
Visiting Nurse Association Fund	
Scholarships in nursing and related health fields	
Christopher P. Waite Memorial Scholarship	
Scholarship for Watertown High School	
Watertown Morning Musicales Scholarship Fund	
Scholarships for students pursuing careers in music	
Cecile T. Williams Memorial Fund	
Scholarships for General Brown Central School	
Total	\$279,422

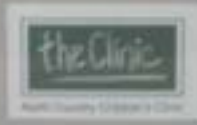
Watertown High School Class of 1956 Scholarship Fund Donors

This new scholarship will be awarded annually beginning in 2006.

Frederick D. Belcher Betty Dygert Belle Richard G. Boyd David N. Camaione Peter M. and Nancy M. Clinton Rose and Tony Crupi Harold W. Darby John D. Hammond and Sharon Myers Hammond	John G. Lewis Timothy R. Nolan Joan Derosia Nusinow Alan K. Percy, MD Francine Petersen Joyce C. and Lawrence W. Ritchie Joseph F. and Sylvia Gonino Rooney Arthur and Carole Williams
--	--



Children's Action Award
Presented to the Northern New York Community Foundation
for its outstanding contributions to the
quality of life for every young citizen
Northern New York Community Foundation



Special Thanks for Your Leadership Support
**Northern New York
Community Foundation**
January 30, 1998
The Campaign for Affirmance, The College, The Community

GIVING & SHARING An American Tradition
**A Community Presence
for 75 Years**
1929 - 2004
32 USA


The Northern New York Community
Foundation is pleased to
present the
Northern New York
Community Foundation
32nd Annual Report
to the community
of
**NORTHERN NEW YORK
COMMUNITY FOUNDATION**
for the year of
The Gift Circle
and the following is 1998.

1998 Wilbur Middle School Award
for Excellence in Communications
HONORARY
Presented
Northern New York Community Foundation
1998 Annual Report



THE GIFT CIRCLE
COMMUNITY FOUNDATION

Symphonic Fantaisie
Musique de chambre - Musique de chambre
Symphonie - Fantaisie - Musique de chambre

The Board of Trustees of
The House of the Good Shepherd
Presents
The Northern New York Community Foundation
to
The Northern New York Community Foundation
for the year of 1998



A COMMUNITY PRESENCE

1929 2004



Northern New York Community Foundation, Inc.

PAST DIRECTORS

Mary Goodale	1930-1946
Delos M. Cosgrove	1930-1934
Robert J. Buck	1930-1941
Harvey R. Waite*	1930-1955
John N. Carlisle	1930-1932
David M. Anderson*	1930-1935
G. Seymour Knowlton	1930-1947
Addison F. Wardwell	1930-1934
Bernard Gray*	1930-1964
John H. O'Brien	1934-1953
M. Seeley Pruyn	1934-1934
R. G. Hannah	1935-1955
J. F. Amos	1935-1958
Clarence Kinne	1935-1950
Walter Atkinson*	1942-1968
Ruth K. Child	1947-1968
Albert B. Scholl	1948-1963
Ross Barker	1951-1968
Delos M. Cosgrove, Jr.*	1953-1980
Howard Farrington	1955-1967
Brainard Rushlow	1956-1975
Russell Wright	1958-1970
Kenneth Wager	1963-1967
Edward Duffy	1964-1968
Hiram Arthur	1967-1971
William C. Couch*	1967-1985
W. Leonard Mahanah	1968-1976
Samuel B. Wardwell, Jr.	1968-1974
Robert E. Wehrle	1968-1973

**Northern New York
Community Foundation, Inc.**

PAST DIRECTORS

James W. Higgins*	1970-1985
Arthur C. Peckham	1970-1976
Karl W. Galliger	1973-1981
Rita F. Mackey	1974-1980
Frank A. Empsall	1974-1986
Donald J. Veniard	1975-1982
James B. Fish*	1976-1986
Wilfreda B. Stone	1976-1983
Frances P. Carter	1980-1990
Richard O. Flechtner*	1981-1991
P. Owen Willaman	1982-1992
Robert G. Horr, Jr.*	1982-1992
Floyd J. Chandler	1983-1993
John Doldo, Jr.	1983-1993
Barbara D. Hanrahan	1983-1994
Norman R. Ahlheim	1985-1995
Everett G. Foster*	1985-1995
Anderson Wise*	1986-1996
Lee T. Hirschey*	1986-1996
David E. Tinker	1996-1998
Richard E. Smith*	1990-2000
Grace A. Wright	1990-2000
Jane N. Lormore	1991-2001
James L. O'Donnell	1991-2001
Donna D. Macsuga*	1992-2002
Mark S. Purcell	1992-2002
John B. Johnson, Jr.*	1993-2003
Jan K. Turcotte	1993-2003

*Served as president

**A COMMUNITY PRESENCE
1929 2004**



A COMMUNITY PRESENCE
1929 2004



**Northern New York
Community Foundation, Inc.**

FORMER DIRECTORS AND STAFF

EXECUTIVE SECRETARIES

Bernard Gray
T. Urling Walker
Richard Flechtner

EXECUTIVE DIRECTORS

James E. McVean
James Higgins

STAFF

Catherine Cullen
Margaret Beaverson
Arlene Young
JoAnn Dager
Thomas Hammers
Barbara Williams
Judith Foster
Christine Owen

Making a Gift to the Foundation

The Northern New York Community Foundation, Inc. serves many donors with a variety of charitable interests. Gifts are tax-deductible and may be made during the donor's lifetime or by bequest in a will.

Bequests - A donor designates that the Foundation is to receive a specific amount, a percent of the estate or a piece of property.

Life Income Gifts - A donor makes a gift to the Foundation, in return for which he or she receives income for life.

Gift Annuity - In exchange for a gift of cash or securities, a donor receives a guaranteed annual payment for life. When the annuity terminates a permanent endowment fund is established in the donor's name. This fund may be used to support a local charitable organization.

Outright Gifts - Gifts made during a donor's lifetime can take the following forms:

Friends of the Foundation Fund - Provides an opportunity for the donor to make a contribution to the annual operation of the Foundation's programs, or to make periodic contributions to the Foundation's endowment in a fund named after the donor or his or her family, or in memory of a loved one.

Unrestricted Fund - To be used as the board deems necessary.

Designated Fund - Allows the donor to restrict payment to named charitable agencies or projects.

Advised Fund - Allows the donor to make tax-deductible gifts to the Foundation and then to make suggestions to the Board of Directors for the philanthropic use of the fund.



Pauline H. Dillenback

*Humanitarian and
Generous Benefactor*

Pauline Dillenback was the daughter of industrialist William P. Herring. Upon her death in 1971 at age 103, her estate came to the Foundation and formed the nucleus of its scholarship and grantmaking programs.

Leaving a Legacy to the Community



Erwin S. Focht

Engineer

A Clarkson graduate, Erwin S. Focht spent his career working for the Hall Ski Lift Corporation in Watertown. Wanting to give something back to the community, his will provided a substantial bequest to the Foundation in his will.

Charitable bequests are an important way Americans make lasting contributions to their communities. If your will includes a bequest to the Foundation, we thank you for your thoughtfulness. We invite you to inform us if you have named the Foundation so that we may acknowledge you along with the other special people who have made future commitments. The confidentiality of all bequest provisions is maintained. If your completed will does not include a charitable bequest, you might consider adding one through a codicil.

Because a charitable bequest is fully deductible from your estate, significant tax savings may result. These savings enable many people to make a charitable gift while preserving most of the legacy they intended for their heirs. You don't need a large estate to make a bequest. It can be of any size and can take many forms.

Some individuals have established living trusts instead of having a will. Such trusts can include charitable provisions similar to other types of bequests.

It is important to provide the exact name of any charity you name as beneficiary so that your gift can be transmitted correctly. For the Foundation, the proper designation is the **Northern New York Community Foundation, Inc.**

Top 10 things you can do to Leave a Legacy

1. Prepare a will. Only half of those who pass away have one. Without a will, you lose control of the possessions you worked a lifetime to acquire.
2. Leave a gift in your will for the local charitable organizations that made a difference in your life. Less than 3% of all wills settled contain a charitable provision. Imagine the positive impact on our community if everyone made even a modest donation to a favorite local non-profit organization.
3. Leave a specific dollar amount or a percentage of the assets in your will to your favorite local charity. The provision can be a part of your will or added as a codicil to your existing will.
4. Name your favorite local charity as the beneficiary of your IRA or pension plan.
5. Consider using assets for your charitable gift. These can include (but are not limited to) stocks, bonds, certificates of deposit, real estate, vehicles, art and jewelry. Such gifts may even provide tax savings.
6. Name your favorite local charity as the beneficiary of an existing life insurance policy.
7. Purchase a new life insurance policy naming your favorite local charity as beneficiary.
8. Remember deceased loved ones with memorial gifts to local charities in your will.
9. Encourage family members and friends to leave gifts to local charities in their wills.
10. Ask your financial advisor to include charitable giving as part of their counsel to other clients.



Dorothy M. Arthur
Teacher

A retired teacher from Lowville, Dorothy Arthur through her will established several funds at the Foundation to benefit Lewis County charities.

Legacy and Memorial Funds

The Foundation's principal growth since 1929 has come from legacies. These sums of money have been made part of the Foundation's endowment or placed in trust for the Foundation. Each year the Foundation also receives memorial gifts in honor of a friend or relative. The persons listed below have made bequests to the Foundation or have had contributions made in their memory.



Genny E. Pond

*Scholarship Recipient,
J.C.C. Professor*

As a Foundation scholarship recipient, Genny Pond attended Clarkson University. Upon earning a master's degree in 1998, she began a career teaching engineering at Jefferson Community College.

Helen H. Adams	Robert L. Deery
Heather Anderson	John W. Dillenback
Dorothy M. Arthur	Pauline H. Dillenback
Walter S. Atkinson	Glenn S. Doull
Mary S. Ayers	Frank A. Empsall
Ross W. Barker	Harlow G. Farmer
Mabel E. Barnette	Erwin S. Focht
Gretta L. Barron	Mary M. Forbes
Julie L. Bettinger	Carl H. Frink
Robert F. Breeze	H. Dean Fuller
Paul E. Brown	Mary S. Goodale
Marion A. Buck	Judith Cohen Gordon
Lila Bull	Ernest and Emma Halley
Alfred and Frances J. Burke	Harold Halley
Charles A. Campbell	Robert J. Hanrahan
Doris E. Carleton	Betty Louise Haviland
Mary E. Carnes	William P. Herring
William B. and Frances P. Carter	James W. Higgins
Minnie F. Clark	Claire C. Hogan
Charles R. Close	Clare M. Holton
Elliot Cohen	Robert G. Horr, Jr.
Charles E. Commeret, Sr.	Nellie M. Horton
Blanche J. Comstock	Henry A. Hudson
Jennifer M. Corbett	John B. Johnson
Luella F. Cornwell	Julia G.E. Johnston
Delos M. Cosgrove	Gary M. Jones
Margaret N. Cosgrove	Ralph LaClair
Earle M. Crysler	Evelyn T. Kelsey
Joan L. Davis	Lucy E. Kendrew
Leon A. Davis	David C. Knowlton



James W. Higgins

*Foundation President
and Executive Director*

Jim Higgins served as a board member from 1970 to 1985. Upon his retirement from the Johnson Newspaper Corporation he became Executive Director. In this capacity he oversaw the addition of Lewis County and the name change of the Foundation.

Legacy and Memorial Funds

Clara G. Learned
 Paula J. Marilley
 Ralph and Marie Marilley
 John F. Marsellus
 James E. McVean
 Mary A. Meichelbeck
 DeWitt C. Middleton
 Wilna Natali
 Thelma C. Ottersland
 Alfred and Frances Paige
 Henry R. Peck
 Rose A. Petrie
 Mildred A. Phillips
 Mary K. Plunkett
 Francis C. Pressaw
 Harriet L. Pruyn
 Robert W. Purcell
 Eugene W. Robinson
 Ray and Lydia W. Robinson
 Colleen St. Pierre
 Ella Savage
 Evelyn M. Shafer
 Harvey Simon
 DeForest H. Smith
 Marion P. Smith
 Susan B. Stone
 Josephine C. Taggart
 Edith S. Valentine
 Christopher P. Waite
 Madge R. Wardwell
 Harold J. Wight
 Cecile T. Williams
 Lawton L. Williams
 Henry Willmott
 John R. Willmott
 Elizabeth A. Wise
 Joanne Wise

MILESTONES

- 1981** A fund was established for the Syracuse Symphony Orchestra to provide five concerts a year in the Watertown area.
- 1986** A grant of \$100,000 helped to establish Hospice of Jefferson County.
- 1988** Lewis County became part of our service area and the Foundation's name was changed to the Northern New York Community Foundation, Inc.
- The 1990s marked a period of unprecedented growth.*
- 1992** Assets were valued at \$9.5 million.
- During the Foundation's sixth decade \$9.7 million in gifts and bequests was received and \$11.7 million in grants was spent including:*
- 1992** \$250,000 to Samaritan Medical Center for a new emergency room.
- 1996** \$100,000 to establish an internet program in area libraries (several years before Bill Gates initiated a similar program).

Since 1980 the Foundation has awarded more than 5.8 million dollars in scholarships.

Scholarship Funds, 1980 – 2003

Northern New York Community Foundation <i>awarded since 1975</i>	\$2,115,256	Carl H. Frink Scholarship <i>awarded since 1998</i>	26,350
Visiting Nurse Association Fund <i>awarded since 1977</i>	458,707	Greenizen Scholarship <i>awarded since 1998</i>	12,650
Herring College Memorial Fund <i>awarded since 1979</i>	2,508,080	Julie Bettinger Memorial Scholarship <i>awarded since 1999</i>	3,070
Delos M. Cosgrove Fund <i>awarded since 1982</i>	29,259	Leon A. Davis Scholarship <i>awarded since 1999</i>	13,100
Gary M. Jones Memorial Fund <i>awarded since 1984</i>	48,360	Alfred and Frances Paige Scholarship <i>awarded since 1999</i>	4,950
Cecile T. Williams Memorial Fund <i>awarded since 1984</i>	92,250	Colleen St. Pierre Scholarship <i>awarded since 1999</i>	3,600
Rose A. Petrie Fund <i>awarded since 1986</i>	141,554	Maurice D. Barnette Scholarship <i>awarded since 2000</i>	1,630
Susan M. Stone Memorial Fund <i>awarded since 1986</i>	3,369	Marie C. and Ralph J. Marilley Scholarship <i>awarded since 2000</i>	21,850
Empire State Leadership Institute <i>awarded 1988-89</i>	3,000	Meichelbeck Family Scholarship <i>awarded since 2000</i>	2,000
BOCES Craftsman Award <i>awarded since 1990</i>	15,500	Watertown Morning Musicales Scholarship <i>awarded since 2000</i>	7,100
Doris E. Carleton Fund <i>awarded since 1993</i>	168,472	Black River Communities Corp. Cox Scholarship <i>awarded since 2001</i>	4,500
Jennifer Corbett Rainbow Scholarship <i>awarded since 1993</i>	10,750	Heather Anderson Memorial Scholarship <i>awarded since 2002</i>	500
Harvey Simon Scholarship <i>awarded since 1995</i>	4,650	College Women's Club of Jefferson Co. Scholarship <i>awarded since 2002</i>	3,150
Charles Campbell Scholarship <i>awarded since 1997</i>	10,350	Christopher P. Waite Memorial Scholarship <i>awarded since 2002</i>	700
Robert F. Breeze Scholarship <i>awarded since 1998</i>	92,267	Dr. Charles E. Commeret Sr. Memorial Scholarship <i>awarded since 2003</i>	500
Glenn S. Doull Scholarship <i>awarded since 1998</i>	3,400		
		TOTAL AWARDED	\$5,810,874

Scholarship Recipients for the 2004-05 School Year

Students listed by high school affiliation

Adirondack

Elaine M. Klingbail
Katherine E. Kreilach
Erica Seelman

Alexandria

Suzanne LeBarron
Erica LeClerc
Cortney M. Munna
Matthew P. Satterley
Vincent M. Smith

Beaver River

Erin I. Honer
Bethany Lee
Alexander L. Lyndaker
Sarah L. Mahiques
Katelyn R. Smithling
Danielle J. Zehr
Jennifer L. Zehr

Belleville-Henderson

Kyle Flagg
Jessica D. Hall
Alexandra M. Jacobs
Bryan Williams

B.O.C.E.S.

Colin Leuze
Deanna Miller

Carthage

Megan A. Cross
Erikson T. LaLone
Mark A. Melara
Kara Novak
Angela N. Stiltner
Paul M. Zando

Copenhagen

Abigail L. LaShomb
Kevin M. Stock
Richard R. Tousant
Brittany J. Zehr

General Brown

Andrea L. Adams
Teasha Cote
Renee A. Danega
Carrie L. Eisenhauer

Kyle R. Halpin
Anders T. Hasseler
Lars O. Hasseler
Kayleigh Nutting
Benjamin R. Pierce
Ashley M.

Pinsonneault
Matthew M. Place
Madison M. Quinn
Sarah Raville
Brian D. Tepfenhart
Stephan J. Vigliotti

Harrisville

Ashley M. Fitzgerald
Shannon K. McCarter
Sarah E. Rowley
Katherine J. Seils
Stacey Marie Valentine

Immaculate Heart

Mark B. Eves
Eileen M. Knapp
Jesse S. Quinn
Monica M. St. Croix

Indian River

Danielle N. Ambrose
Michael D. Coleman

LaFargeville

Kristin I. Flood
Kyleigh K. Gloska
Ashley M. Hunter
Sarah E. McFadden

Lowville Academy

Amanda J. Ashline
Heather M. Bennett
Sarah L. Bennett
Julie L. Berrus
Kelly R. Birchenough
Tory Brownell
Heather Cannan
Emily Cole
John Cushing
Ashley E. Dening
Keisha Erb

Aaron N. Farney
Megan E. Fowler
Kathleen Gafney
Lauren K. Hall
Cheyenne L. Harmych
Nathaniel D. Herr
Rachel E. Jeffers
Zachary Kozick
Stanley Lehman
Taylor Malone
Heather Martin
Sara Maxson

Michael R. McArdle
Ryan P. McAuliffe
Kathleen McIntosh
Michelle Monnat
Michael Niles
Marla E. Norris
Phillip G. O'Connor

Alexis Peebles
Jackie S. Purvines
Rebecca Regetz
Katrina Roes
Kristie Ross
Laurel J. Shambo
Amanda J. Tabolt
Rachel B. Zehr

Lyme

Gavin B. Tedford

Sackets Harbor

Elizabeth R. Anthony
Noah R. Burdick
Brandon J. Dwyer
Samuel E. Horr
Thomas A. Liptrott II

South Jefferson

Kimberlee A. Beevers
Michael Dack
Tara Erdner
Kyle M. Foulger
Natalie M. Foulger
Ivy R. Haldeman
Beth E. Jones



Jennifer Corbett

High School Student

As a Watertown High School student, Jennifer Corbett succumbed to a brain tumor at the age of 16. A group of her friends established a scholarship at the Foundation so that the community would always remember her courage and spirit.

Scholarship Recipients for the 2004-05 School Year



Robert F. Breeze

Loyal Native and Benefactor of Lewis County

Robert Breeze was born in 1909 at Lowville Academy where his father served as principal.

Although he left the area at an early age, he never forgot his time here. In his will he left a bequest establishing a scholarship fund for Lowville graduates.

South Jefferson (cont.)

Rose Jones
Kyle LaLone
Margaret H. McFadden
Kasie Naklick
Elisabeth Nichols
Stephen P. Osborne
Shaunna M. Walton
Megan Woodard

South Lewis

Laura M. Beiler
Elizabeth A. Golden

Thousand Islands

Brian Boyle
John P. Brabant
Caitlin M. DeMay
Andrew Eckert
Julia H. Fairman
Lyndsay E. Ferguson
Lara J. Lee
James D. McCune
John P. Middlestate
Shelly M. Upton

Watertown

Kacey Anderson
Ryan C. Backus
Melissa Beach
Brett Berkman
William D. Carr
Mahalia Dawes
James DeMay
Claire Ellsworth
Kristy L. Fairbanks
Jessica French
Todd M. Garvey
Jennifer Getman
Amber Gressler
David Guy
Lindsay Hagemann
Andrew S. Hart
Nicole James
Lana Liinve
Anna Maria Luisi

Anthony P. Luisi
Laura A. Lyman
Nicholas A. Machia
Jennifer L. Mentry
Sarah A. Newman
Stephanie Niewieroski
Benjamin J. Nugent
Corey Pentoney
Thomas Reichhart
Jesus Morales Rivera
Mark Simmons
Alexandra Smith
Christopher J. Sutton
Adam R. Taddonio
Joshua Weinstein
Linda J. Williams
Daniel Zittlow

College Junior Awards

Shannon E. Baker
Kathryn L. Biedekapp
Lisa Binsley
JoAnna R. Bush
Tyler J. Clemons
Jessica L. Condello
Bradley DeMay
Brooke A. Denslow
Michael Dowe
Kelli J. Duncan
Erik T. Durkish
Danielle M. Farmer
Devon J. Gillan
Kristen Hammond
Rachel E. Heise
Kylie Ingerson
Amanda Joels
Melissa R. Lister
Bryan Matthews
Mary-Frances McCuaig
Paul D. Mills
Wade D. Newman
Carla B. Overton
Trinia-Marie Petrie
William Shatraw

Darcey J. Simmons
Sonya Venitelli
Kelly Virkler
Jennifer Walck
Crystal Woods

Non-Traditional Students

Kelly Adsit
Rebekah A. Alford
Gregory W. Aubertine
Lorraine A. Berrus
Jacob B. Bosco
Scott T. Bowman
Autumn R. Cobb
Cheryl A. Cody
Nome T. Compton
Justin Cooper
Dawn M. Davis
Gretchen Farney
Marcia M. Graves
Erin R. Hayes
Matthew J. Humphrey
Steven M. Hunter
Darlene A. Jefford
Michele R. Jeican
Karen A. Jessman
Brenda L. Kalynycz
Robert J. Marsh, Jr.
Stephanie J. Martin
Larry L. Noftsier
Jeffrey S. O'Brien
Valerian P. Ocampo
Maggie M. O'Dell
Pablo Otero
Tammy J. Potter
Jack E. Shelmidine II
April Spitzer
Meredith R. Veith
Mechia Williams

Memorial Funds

Each year the Foundation receives memorial contributions in honor of friends and relatives. Funds have been received in memory of the following:

Julie L. Bettinger Scholarship

Jaime S. Lake
Wanda Ruth Staley
Kimberly M. Taylor

Alfred and Frances J. Burke

Dr. and Mrs. Eugene W. Robinson

Dr. Charles E. Commeret Sr. Scholarship

Charles E. Commeret, Jr.
June A. Commeret
Stephen Commeret

Jennifer Corbett Scholarship

Wanda Frappier

Glenn S. Doull Scholarship

Doris Sellers Memorial
Case Junior Retirees

Forbes Thousand Islands

Central School Scholarship

Mary M. Forbes Memorial
Ann and Jim Elliott
George W. Forbes

H. Dean Fuller

Denny A. Fuller

Judith Gordon

A. Edward Gordon

John B. Johnson

Ann Johnson-Kaiser
Susan L. Washburn

Nicholas Manfred

Johnson Newspaper Corporation

John E. Maxson

Roger and Barbara White

Dr. Eugene W. Robinson

Louis B. Adams, Jr., CPA
Anne Richter Ashley and Brian Ashley
Bill and Linda Autrey and Family

Dr. and Mrs. Robert H. Baysinger
Brookside Cemetery Association, Inc.
Capital Construction Corporation
Jane A. Carpenter and Carpenter Family
Dr. and Mrs. George G. Couch
William and Helen Couch
Mr. and Mrs. William C. Couch
Laura Grow D'Angelo
Julie Grow Denton
Dr. and Mrs. James B. Fish
Ella Marie Fults
Lewis and Michelle Fults
Jack and D. J. Fults
Shirley P. Griggs
The Hon. John W. Grow
Mr. and Mrs. Frederick S. Haggerty
Richard and Charlotte Hall
Kristen and David Harroun
John and Lorraine Henderson
Patricia Henry – Entitle Agency, Inc.
Carol Hills
George and Bernice Hurley
Bill Keene
Carleton and Beverly Lamica
William L. LaVanchard Family
Dr. and Mrs. R. Joseph Marilley, Jr.
Mr. and Mrs. William C. Mason
Dr. and Mrs. John McCreary
Dr. Mark and Sharyne McWilliams
Hope R. Metcalf
Mr. and Mrs. Tony Morgia
Jim and Martha O'Donnell
Janet E. Phillips
Richard and Janet Robinson
Mr. and Mrs. John H. Rychener
Jane V. Schmitt

MILESTONES

- 1997-03** The first Lewis County bequests were received from Robert F. Breeze, establishing a scholarship program for Lowville Academy graduates, and Dorothy A. Arthur, to support Lewis County charitable organizations.
\$1.2 million in food was given to food pantries and soup kitchens over 5 years.
- 1999** \$500,000, the Foundation's largest grant, to the Watertown Family YMCA for its new addition.
- 2001** \$300,000 matching grant to establish an endowment for the Thompson Park Conservancy.
As of January 1, 2004 the Foundation's assets were \$24,682,151 and the value of outside trusts was \$4,194,236.
- 2004** \$350,000 was given to North Country Children's Clinic and \$250,000 to Flower Memorial Library for capital campaigns, the largest amount ever granted in a single funding cycle.



**Evelyn T. and
Dr. Earle J. Kelsey**

Theresa resident Evelyn T. Kelsey provided the Foundation with a significant fund through her estate. Her husband Dr. Earle J. Kelsey, a local dentist, predeceased her.

Dr. Eugene W. Robinson (cont.)

Thomas and JoAnn Schwalm –
Thousand Islands Country Club
Gerald and Mary Sheldon
Robert F. Silkey
Joanne D. Van Slyke
David J. Walton
Barbara and Roger White
Ray and Peggy White
Mr. and Mrs. Henry Willmott
Graham and Gay Wright
Stuart and Sally Young
David and Barbara Zembiec

Ray and Lydia W. Robinson

Dr. and Mrs. Eugene W. Robinson

Christopher Waite Scholarship

M. Maureen Rooney
Philip G. Waite

Lawton L. Williams

Joel W. Ager
Harold and Jane Allen
Maria Teresa Doyle
Dr. and Mrs. James B. Fish
Andrea Lynch
The Hon. and Mrs. J. Robert Lynch
Mr. and Mrs. William N. Miller
John S. Parker

Henry Willmott

Floyd Bajjaly, M.D.
William C. Couch
Marion Empsall
Rande Richardson
Mary Alice Robinson
Mr. and Mrs. W. Graham Wright

At a Glance . . .

Legal Name: Northern New York Community Foundation, Inc.

Federal Tax ID Number: 15-6020989

Sample Will Language: Provided upon request

Gift of Securities, Real Estate, Life Insurance: Accepted. Transfer information on request.

Life Payment Plans, including Charitable Gift Annuities, Charitable Remainder

and Lead Trusts: Tax calculations and projections provided as well as documents.

If you are interested in a Scholarship or Grant:

The Foundation annually awards scholarships to high school seniors for their freshman year in college, college sophomores for their junior year and non-traditional students for any year in college or technical school. Students must be enrolled in a full-time undergraduate program and be residents of Jefferson or Lewis Counties.

Applications are available in mid-February online at www.nnycf.org and from our office. Deadline for return is April 1.

Grants to non-profit organizations are awarded quarterly. Application deadlines are *February 1, May 1, September 1, and November 1.*

Please contact us for a copy of our grant guidelines.

Advisor Information

As a professional advisor, you play a key role in increasing the charitable resources of the Northern New York community. One of the simplest and most important questions you can ask your clients is the giving question – *“Are there charitable or community needs you would like to consider in your estate planning?”*

Charitable giving offers specific tax benefits that can assist your clients in achieving financial, personal or business goals. By giving through the Foundation, your clients can receive the full benefit of their contributions while supporting the charities of their choice, now and in the future.

With over 70 years of experience, the Northern New York Community Foundation is a center for charitable giving in the community. Whether your clients are interested in building a tradition of family involvement in charitable giving or in finding an alternative to a private foundation, we can help you address their interests and goals. Since the Foundation is both permanent and flexible, donors are assured that the spirit of their gifts will endure.

The Foundation provides numerous options for establishing charitable funds based on your clients’ interests and desired level of involvement. Through a variety of gift planning options, we can help you serve your clients in developing bequests, funds and trusts that will carry out their unique charitable goals.

For more information or to request a copy of the Advisor Information Packet, please call Alex Velto at the Northern New York Community Foundation, 315-782-7110. The packet covers a range of topics, including what assets donors can use to make a gift, the types of funds and deferred giving options available through the Foundation, and the tax benefits of gifts to a community foundation.



John F. Marsellus

Philanthropist

John F. Marsellus knew the importance of supporting the life of the communities in which he lived. A long time donor to the Foundation during his life, upon his death he left his property in Henderson Harbor and a dollar bequest to the Foundation.

Friends of the Foundation

The Foundation offers donors a variety of ways to achieve charitable objectives. Friends of the Foundation have made gifts during their lifetimes or through their estates. Lifetime gifts are outright or in exchange for life income. They may be for unrestricted use or to establish in perpetuity a scholarship or fund for a particular organization or area of interest. Some funds permit the donor to make suggestions on the fund's use. Whether through an outright bequest or the establishment of a charitable remainder trust, many have supported the Foundation through their estates.



John B. Johnson

Civic Leader, Communications Pioneer, Newspaperman
As editor and publisher of the Watertown Daily Times from 1949 until his death in 2001, John B. Johnson was a friend and donor to the Foundation. Upon his death, the Foundation received a legacy in his name.

[†]*Deceased*

Norman R. and Cynthia R. Ahlheim
Donald C. Alexander
Barbara Amos
Association for Quality & Participation
Thousand Islands Chapter
Jane M. and James T. Bernier, Sr.
Black River Communities Corporation
Irene Bowen
Douglas and Mary Jane Brodie
Beverly A. and Bernard H. Brown, Jr.
Elizabeth Brown
Michael K. Brown
Brownville Specialty Paper Inc.
Canton Community Fund
Susan Carlin
[†]William B. and [†]Frances P. Carter
Case Junior Retirees
Keith B. and Mary D. Caughlin
Floyd and Mary-Beth Chandler
William A. and Ruth E. Chapin
Lee Clary
Climax Manufacturing Company
Clover Capital Management
Benjamin P. and Margaret B. Coe
College Women's Club
of Jefferson County
Mary G. Colton
Nancy R. and William W. Conde, III
Dr. George G. and Lis S. Couch
William C. and Margaret C. Couch
Sidney T. Cox
George R. Davis
Morse G. and Mary T. Dial
Trent S. and N. Janine Dickey
Patricia and John Doldo, Jr.
Neville A. and Jean D. Dowe
Edward W. and Jean M. Duffy
Nancy Young Duncan
Ellsworth Family
[†]Frank A. Empsall
Marlene R. Ennis
Ennis-Sarti Family
James B. and Ruth M. Fish
Richard O. Flechtner
George W. Forbes
Everett G. and Judith J. Foster
Denny A. Fuller
Charles Garlock & Sons, Inc.
Royal Garlock, II
Janet J. and Henry L. George, III
Ann D. and H. Pim Goodbody, Jr.
A. Edward Gordon
Larry E. Gordon
[†]Elizabeth Wise Graham
William J. Grant, M.D.
Dr. David G. Gregor
Shirley P. Griggs
Barbara D. and [†]Robert J. Hanrahan
David B. Harberg
David L. and Suzanne Wise Hawley
Haylor, Freyer & Coon, Inc.
Constance A. and [†]James W. Higgins
John C. Hirschey
Lee T. and Deborah B. Hirschey
Urban C. and Sally H. Hirschey
Dorothy P. and [†]Robert G. Horr, Jr.

Susan B. and Robert G. Horr, III
 Richard C. Howland
 HSBC Bank - Regional
 Josephine Hudson
 Donald M. and Donna B. Hunt
 Charles R. and Marjorie A. Hyde
 Ierlan Family
 Paula D. and *George G. Inglehart
 Susan M. and John B. Johnson, Jr.
 Johnson Newspaper Corporation
 Ann Johnson-Kaiser
 JRECK Subs, Inc.
 James R. and Evelyn B. Kanik
 Key Bank of Central New York
 *David C. and *Jane L. Knowlton
 Joan L. and *Ralph J. LaClair
 Carleton H. and Beverly T. Lamica
 Mart and Mai Liinve
 Dr. John F. and Jane N. Lormore
 Richard R. and Mary H. Macsherry
 Macsuga Family
 Anthony J. Malara-
 Robert F. Dacey Memorial
 Dr. Ralph J. Marilley, Jr.
 Richard Marilley
 *John F. Marsellus
 Ted and Mary Mascott
 Kenneth J. and Marion R. McAuliffe
 George M. McCulloch
 Donald F. and Barbara A. McGrann
 John N. McMath, Jr.
 Joseph R. Meichelbeck
 Hope R. Metcalf
 Tony and Kay Morgia
 Viggo Mortensen
 J. Richard and Carol K. Munro
 Allan and Kate Newell
 The Sweetgrass Foundation
 James L. and Martha O'Donnell
 Dr. C. Arthur and Judy Pearson
 Pines Bridge Foundation
 P.S.G. Plumbing, Heating and
 Air Conditioning, Inc.

Mark S. and Maria F. Purcell
 William J. and Catherine B. Quencer
 Marjorie A. and *David M. Ransom
 Dora E. and Arthur F. Reid, Jr.
 Grace Louise Reinman
 Margot Remington
 Maggie Rizer
 Edward and Denise Robertson
 Mary Alice and *Dr. Eugene W. Robinson
 T. Michael Savage
 Louise and Mark Scarlett
 Erma R. Schell
 Richard M. and Ann D. Schmidt
 Mary Margaret and *Richard F.
 Schwerzmann
 David Shearer
 John H. and Patricia C. Shortt
 *Helen E. Smith
 Richard E. and Carol Smith
 Philip J. and Emily G. Sprague
 Eunice Stone
 Dr. Irwin K. and Wilfreda B. Stone
 Dr. Jan K. Turcotte
 Dr. D. Peter and Dacia Van Eenenaam
 Anna J. and W. Barton Van Slyke
 Alex C. Velto
 Visiting Nurse Association
 Elizabeth A. Walker
 T. Urling and Mabel B. Walker
 Paula V. and Addison F. Wardwell, II
 Watertown Morning Musicales
 Watertown Pepsi-Cola
 Watertown Savings Bank
 Watn-Cheney Corp.
 Robert E. and
 Elizabeth Price Meyers Wehrle
 P. Owen and Dorothy E. Willaman
 Emily T. and *Henry H. Willmott
 Anderson Wise
 R. Halsey Wise
 W. Graham and Grace A. Wright
 WWNY-TV7
 Wende and William J. Young, III



Charles R. Close

Local Businessman, Volunteer

Charlie Close was a familiar figure in downtown Watertown. As proprietor of the Karmelkorn Shop, there was little that happened without his knowledge. When he died, he left bequests to the Foundation as well as to his favorite charities.

Northern New York Community Foundation, Inc.

Financial Summary

Fiscal year ending December 31, 2003

Assets

Current Assets	\$ 1,974,340.00
Fixed Assets Net of Appreciation	8,462.00
Investments	20,793,972.00
Gifts and Bequests Receivable	<u>1,905,377.00</u>
TOTAL	<u>\$24,682,151.00</u>

Liabilities and Fund Balance

Grants Payable	557,720.00
Endowment Liability	708,846.00
Gift Annuity Liability	336,819.00
Total Fund Balance	<u>23,078,766.00</u>
TOTAL	<u>\$24,682,151.00</u>

Summary of Transactions

Support and Receipts

Gifts and Contributions	1,049,335.00
Income from Independent Trusts	42,730.00
Income from Investments	396,740.00
Gain on Sale of Investments	<u>3,649,120.00</u>
TOTAL	<u>\$5,137,925.00</u>

Disbursements

Grants	950,187.00
Administrative	222,026.00
Depreciation	5,863.00
Amortization of Gift Annuity	<u>32,384.00</u>
TOTAL	<u>\$1,210,460.00</u>

NET INCREASE

\$3,927,465.00

The Northern New York Community Foundation, Inc. receives income from outside trusts.

The market value of these trusts on December 31, 2003 was \$4,194,236.87.

Annualized Investment Performance

as compiled by the Council on Foundations (net of fees)

Years	1	3	5	7	9	10
	22.0%	2.9%	4.8%	7.9%	10.7%	10.0%



Lila G. Bull

Artist and Teacher

Born in Ellisburg and graduating from Union Academy of Belleville, Lila Bull taught art for 37 years, retiring in 1970. Upon her death at age 92, her estate established a trust, one third of the income from which comes to the Foundation.

2003 Board of Directors

Janet J. George
President

Philip J. Sprague
Vice President

James R. Kanik
Secretary/Treasurer

Donald C. Alexander

Douglas S. Brodie

Bernard H. Brown, Jr.

Lee Clary

Susan B. Horr

Mary McDonald Mascott

Kenneth J. McAuliffe

Tony Morgia

Catherine B. Quencer

D. Peter Van Eenenaam

Anderson Wise

Staff

Terry Ierlan *Accountant*

Louise E. Scarlett *Administrative Assistant*

Alex C. Velto *Executive Director*

Report Credits

Judith J. Foster *Editor*

Elaine P. Garvey *Design*

Acknowledgments

Thanks to the following for providing us with photographs used in this report:

Dartmouth College Library, Gov. Flower Monument Centennial
Committee, Jefferson Community College, Jefferson County Historical
Society, Samaritan Medical Center, Watertown Daily Times

Watertown Foundation, Inc.

of

Watertown, New York



DIRECTORS:
NORMAN R. AHLHEIM
... .. CARTER

STAFF:
JAMES McVEAT
Executive Director
JOHN M. GALEN
Administrative Assistant

WATERTOWN FOUNDATION
120 Washington Street
WATERTOWN, NEW YORK
INCORPORATED 1929



120 Washing



... .. New York 13602

1975

ANNUAL REPORT

DIRECTORS:
... ..
... ..
... ..
... ..
... ..
... ..
... ..
... ..



... ..
... ..
... ..
... ..

... ..
... ..
... ..
... ..

... ..
... ..
... ..
... ..

... ..
... ..
... ..
... ..

... ..
... ..
... ..
... ..

... ..
... ..
... ..
... ..

... ..
... ..
... ..
... ..



Northern New York Community Foundation, Inc.
HSBC Building - Suite 400
120 Washington Street Watertown, NY 13601

phone: (315) 782-7110 FAX: (315) 782-0047

www.nnycf.org

email: info@nnycf.org

